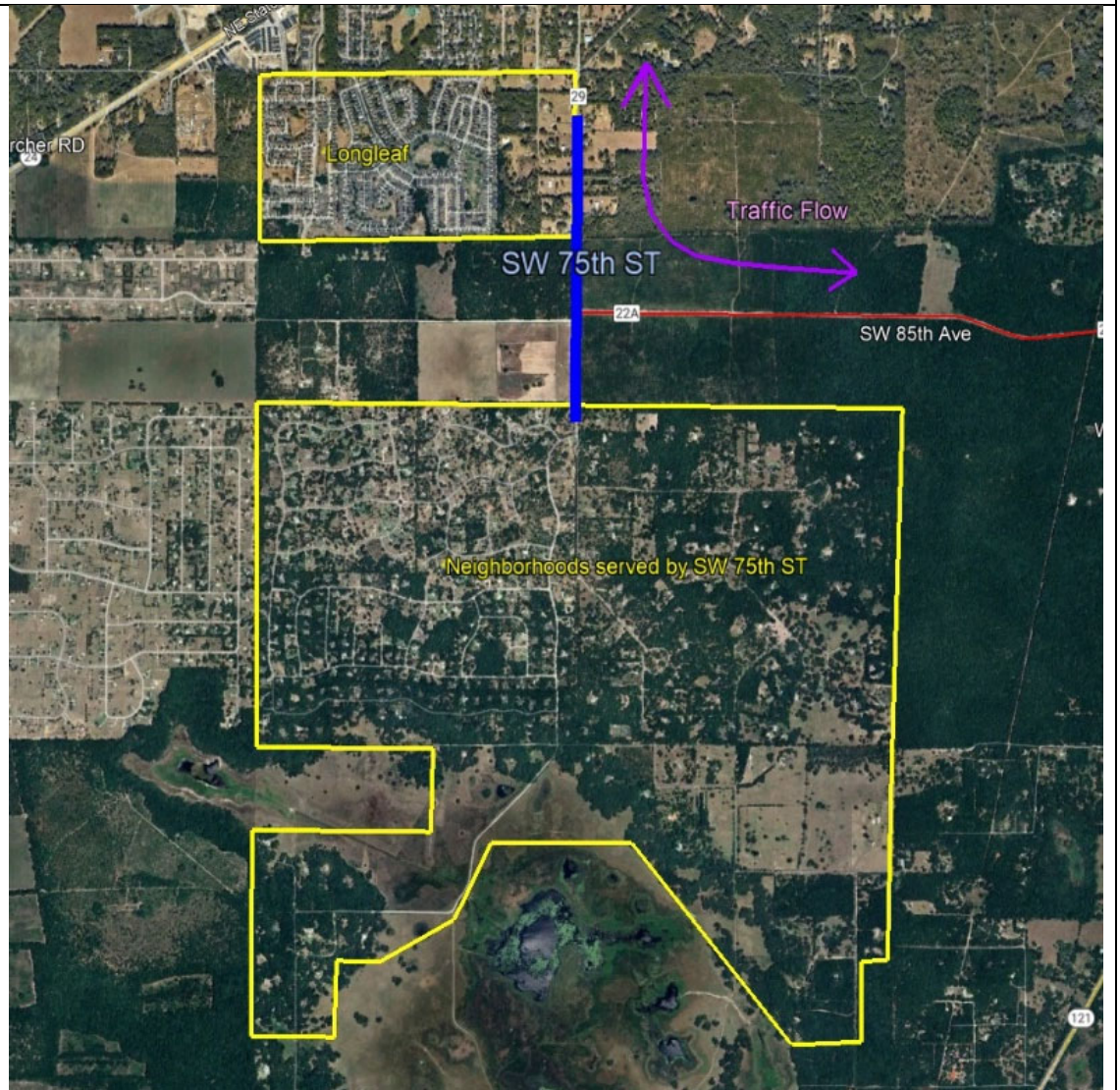


1. Regional View of SW 75th Street (in blue).



2. Close-up view of SW 75th ST, showing subdivisions served by this road.

"Short cut route" shown in purple.



3. Hundreds of potholes with cold-patching, and severe alligator cracking.



4. School buses and heavy delivery trucks make multiple trips each day.



5. Large potholes in travel lanes force vehicles to swerve into on-coming travel lane or off the pavement, causing edge crumbling.



6. Large and deep potholes open up after every heavy rain.



7. SW 75th @
SW 85th Avenue
– potholes &
alligator
cracking.

8. At right: SW
75th @ SW 85th
Ave – facing
north. Potholes
abound in the
middle of the
road.





9. View of SW 75th looking south from Westside (SW Kanapaha) Baptist Church.



10. North end of SW 75th looking towards Brytan. Note rutting & potholes.



11. Satellite view of cars dodging potholes in both directions.



12. Satellite view of hundreds of potholes in middle of SW 75th ST.